

2x Login and Download Instructions Windows

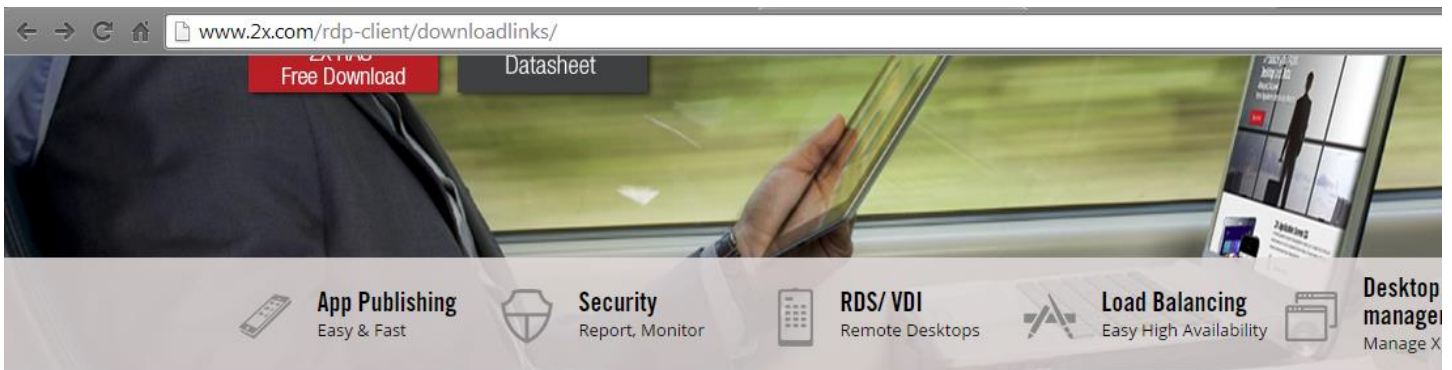
1. To download the 2x Client
2. In your address bar type
<http://www.2x.com/rdp-client/downloadlinks/>



3. Scroll Down and select [2X RDP Client for Windows 64-bit](#), or if you have a 32bit system select 2X RDP Client for Windows (The top most link), and this will begin the download.

You may alternatively click on this link.

If you do not know whether you have a 32bit, or 64bit operating system, only older systems will be running 32bit. If you are unsure, you can find this out by right-clicking on “My Computer” and going to Properties. It will say on this page which it is.



Download the 2X RDP Clients

Windows

[2X RDP Client for Windows](#)

[2X RDP Client for Windows 64-bit](#)

[2X RDP Client for Windows Portable \(ZIP\)](#)

[2X RDP Client for Windows 64 - bit Portable \(ZIP\)](#)

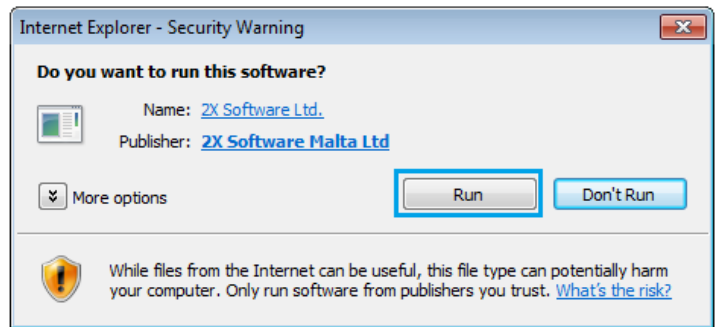
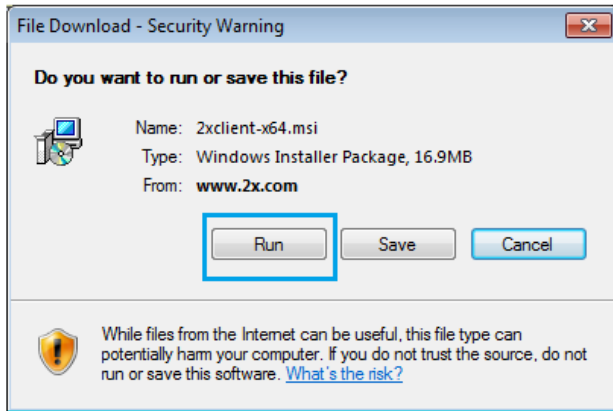
[2X RDP Client for Windows Portable \(EXE\)](#)

[2X RDP Client for Windows 64 - bit Portable \(EXE\)](#)

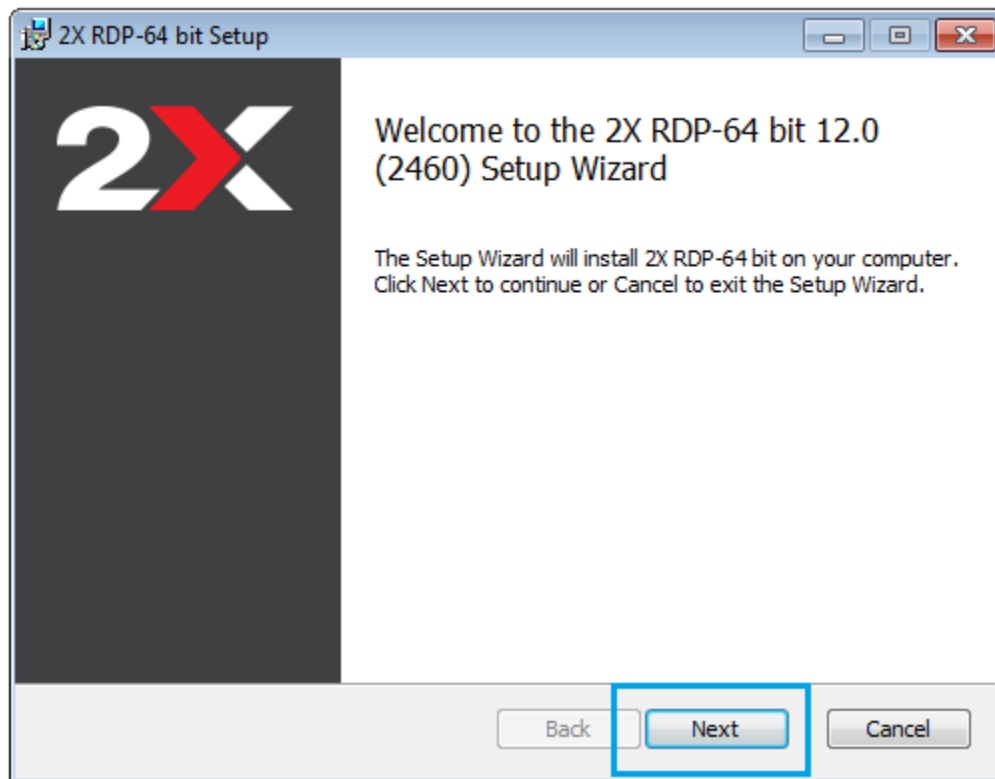
4. Depending on your browser, Select Run, and it may ask you to select Run again

(If you do not see Run, check your Downloads folder)

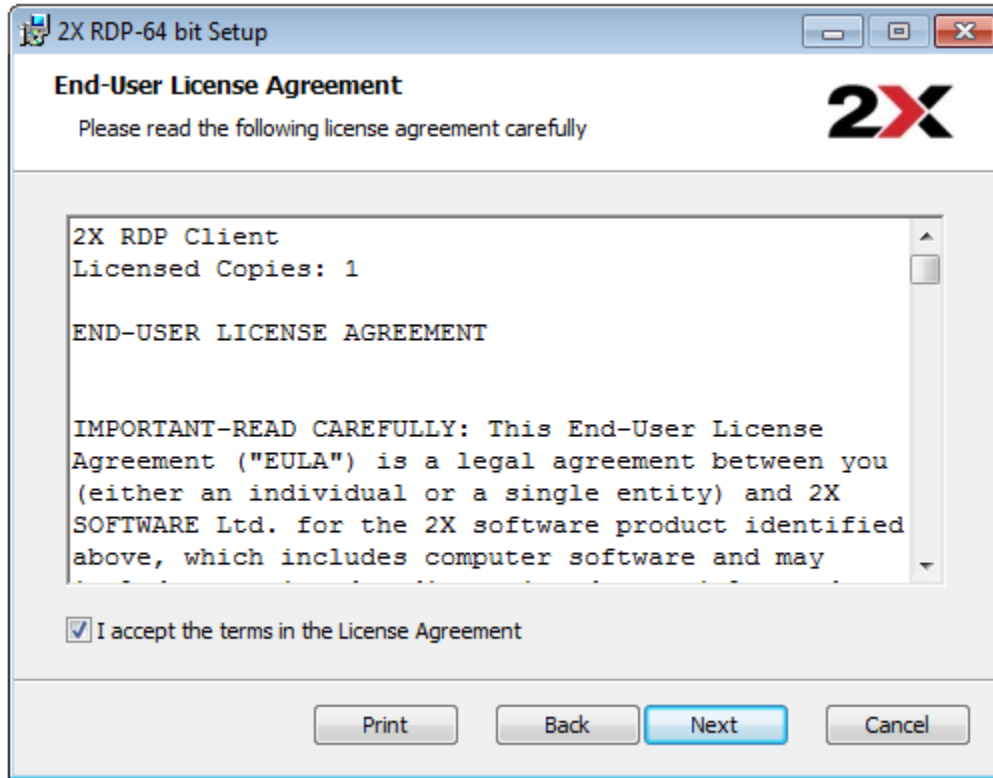
Downloading 2x Client



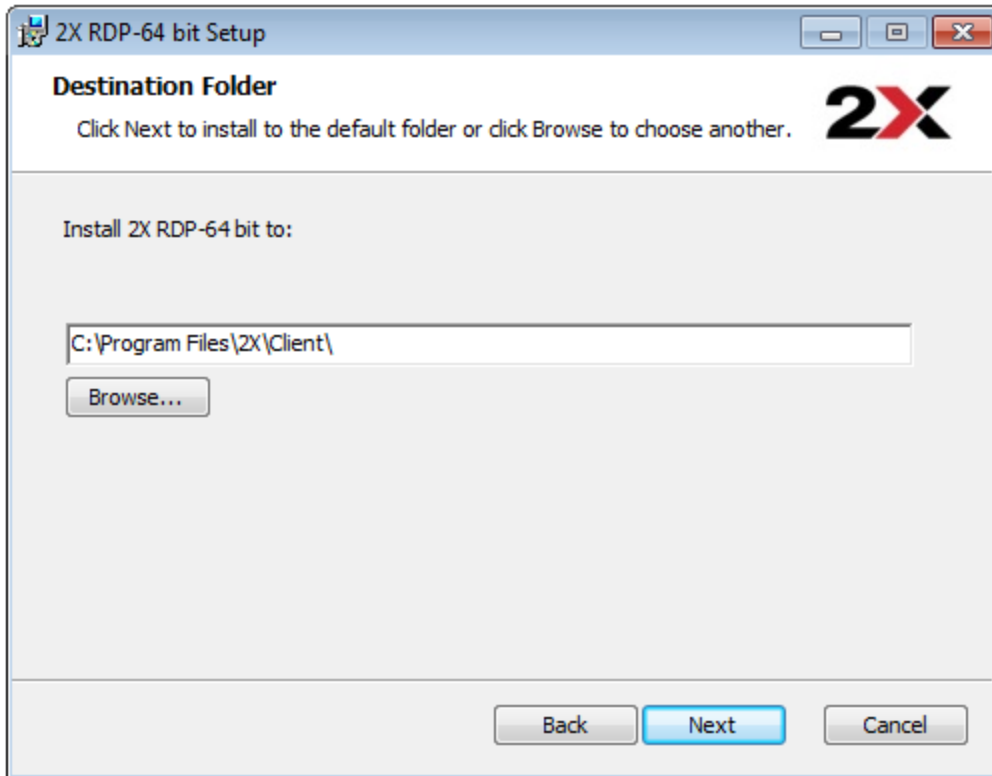
5. Now we will run the Setup. Click Next.



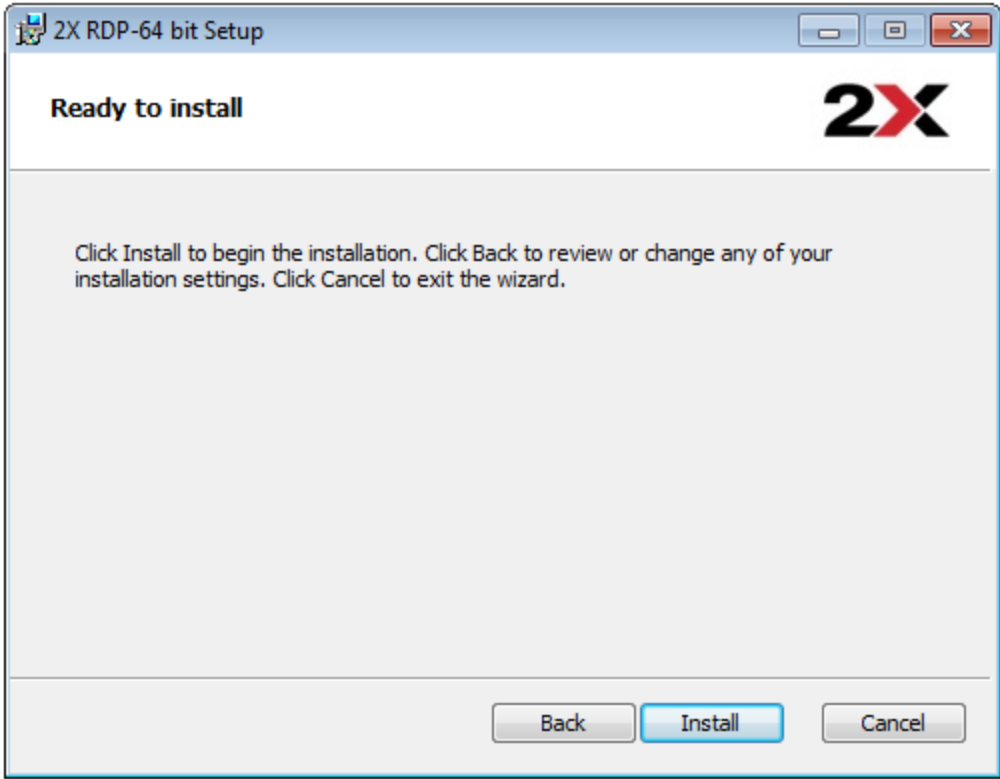
6. Accept the Terms of Agreement, and select Next



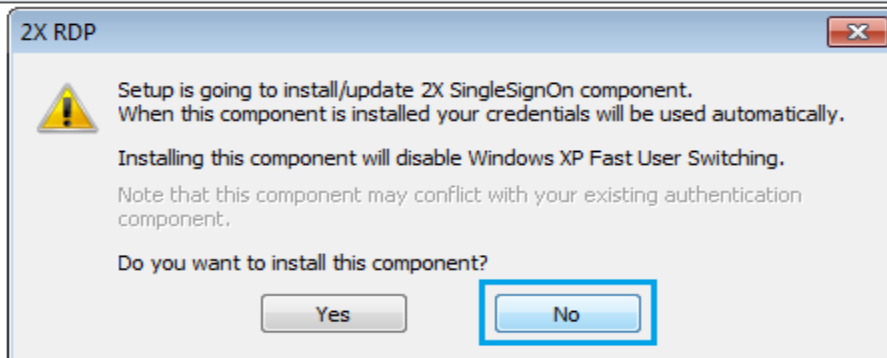
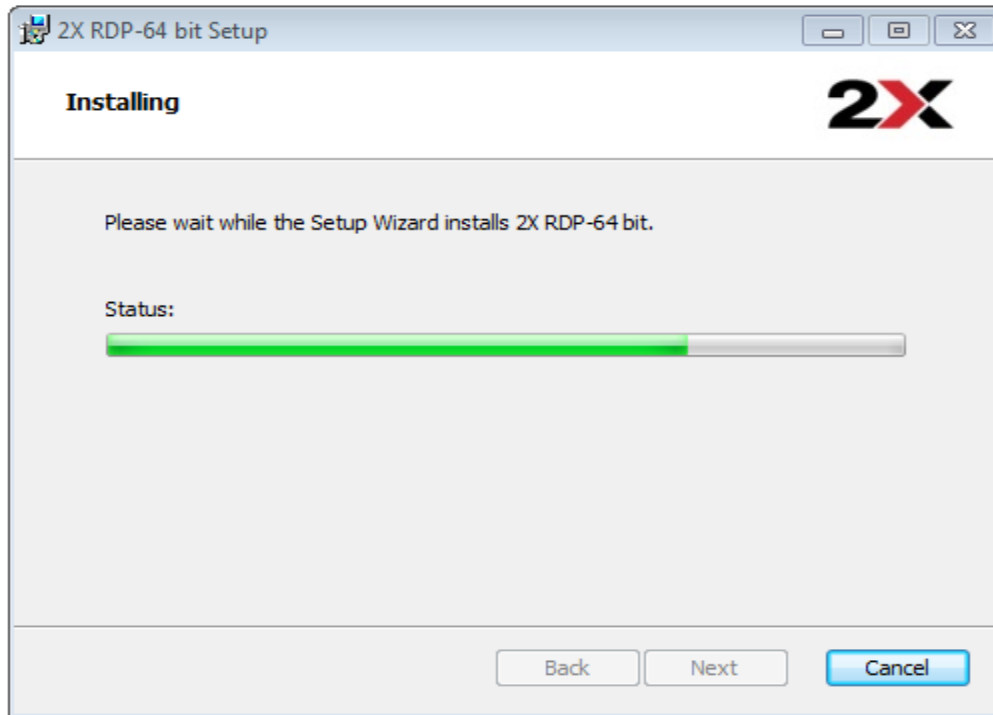
7. Select Next



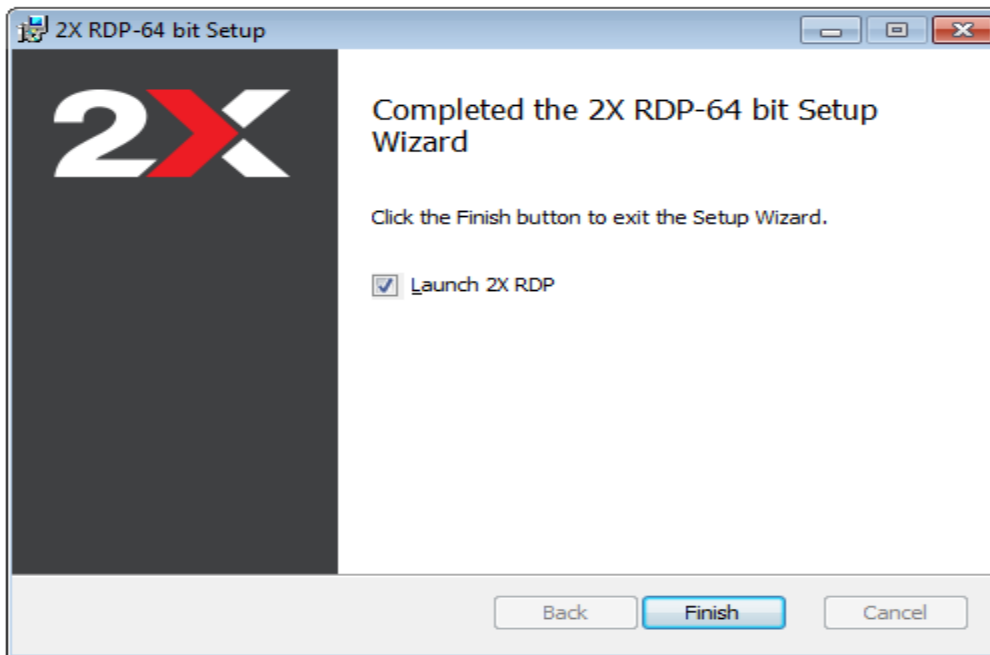
8. Select Install



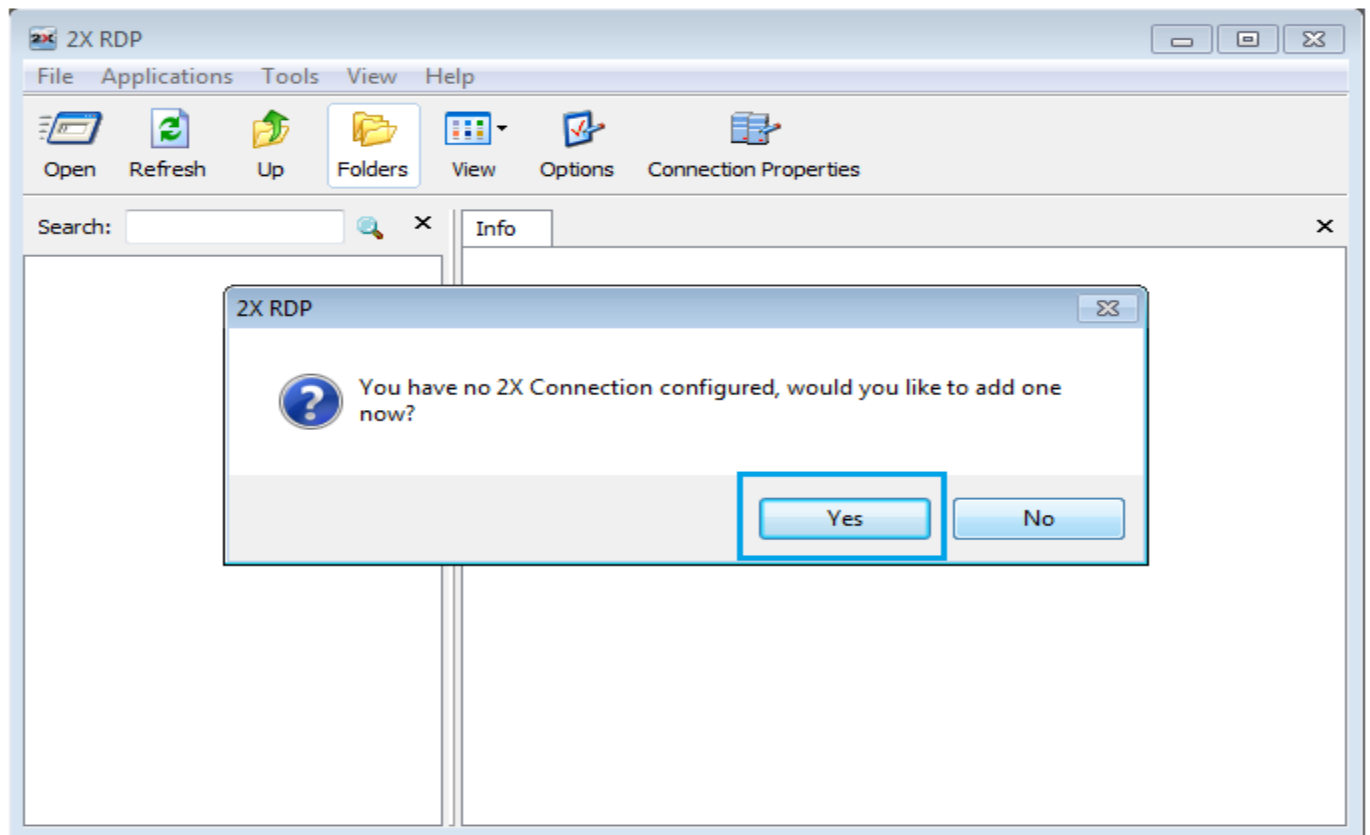
9. It will ask you about SingleSignon during the install, Select No



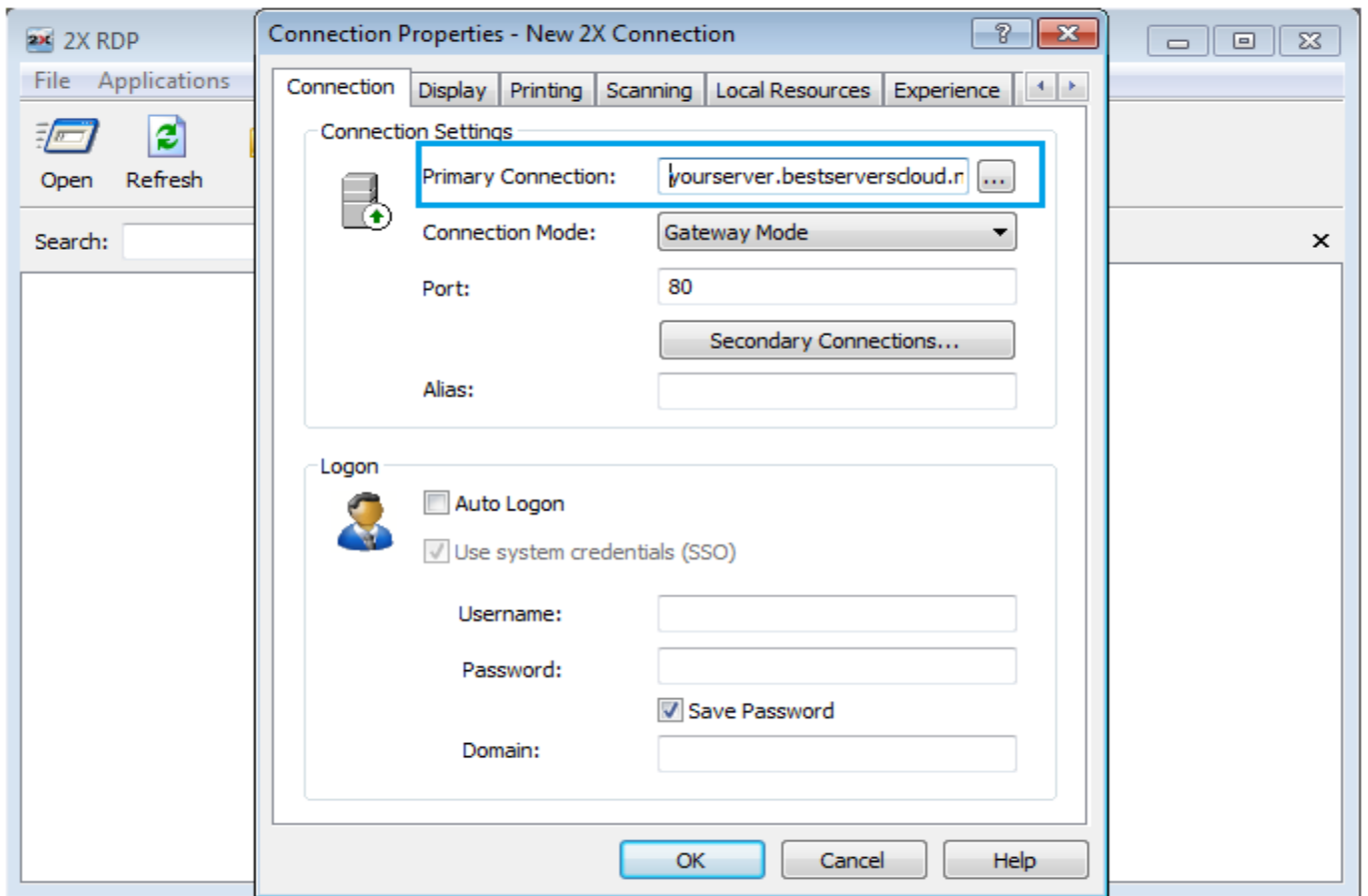
10. Installation is finished, select Finish



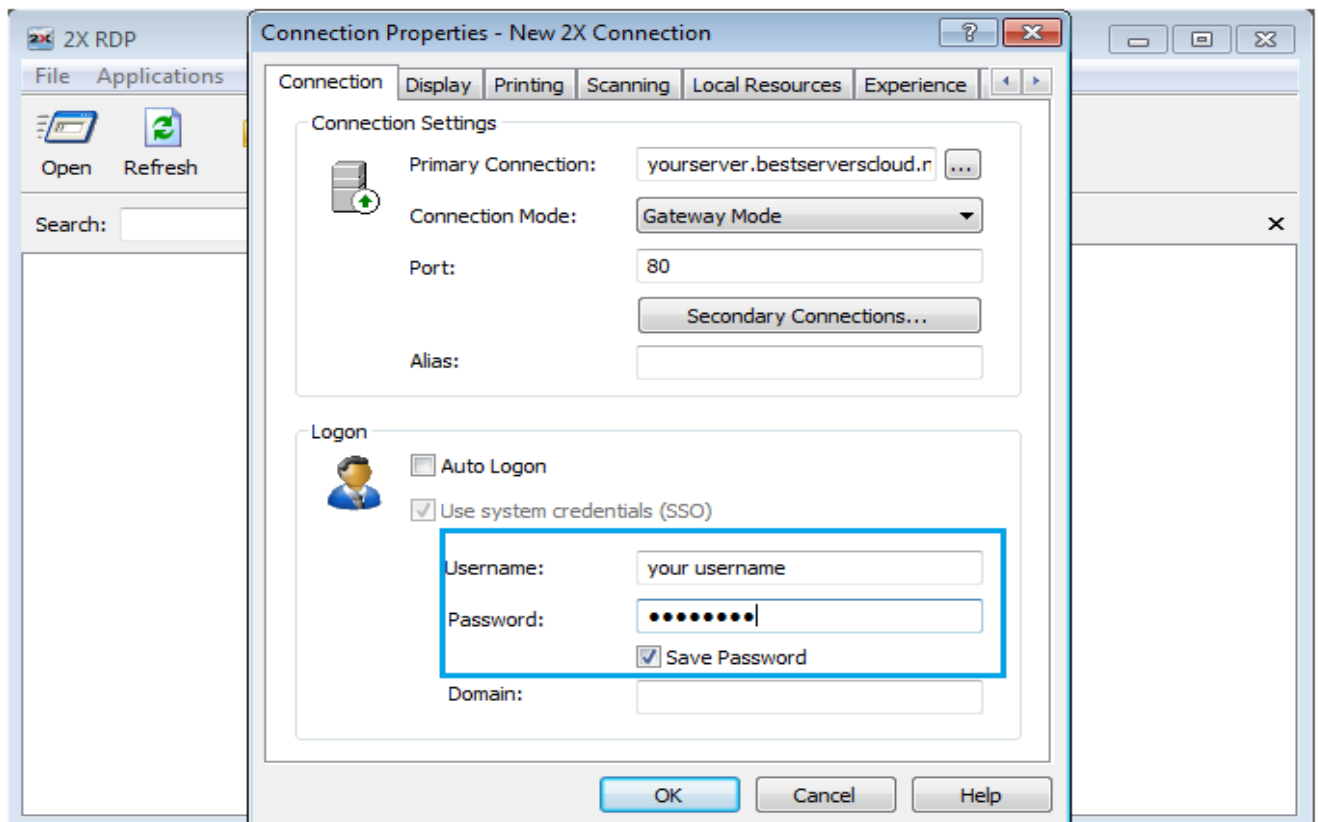
11. 2X will open and ask if you to configure a new connection, select yes



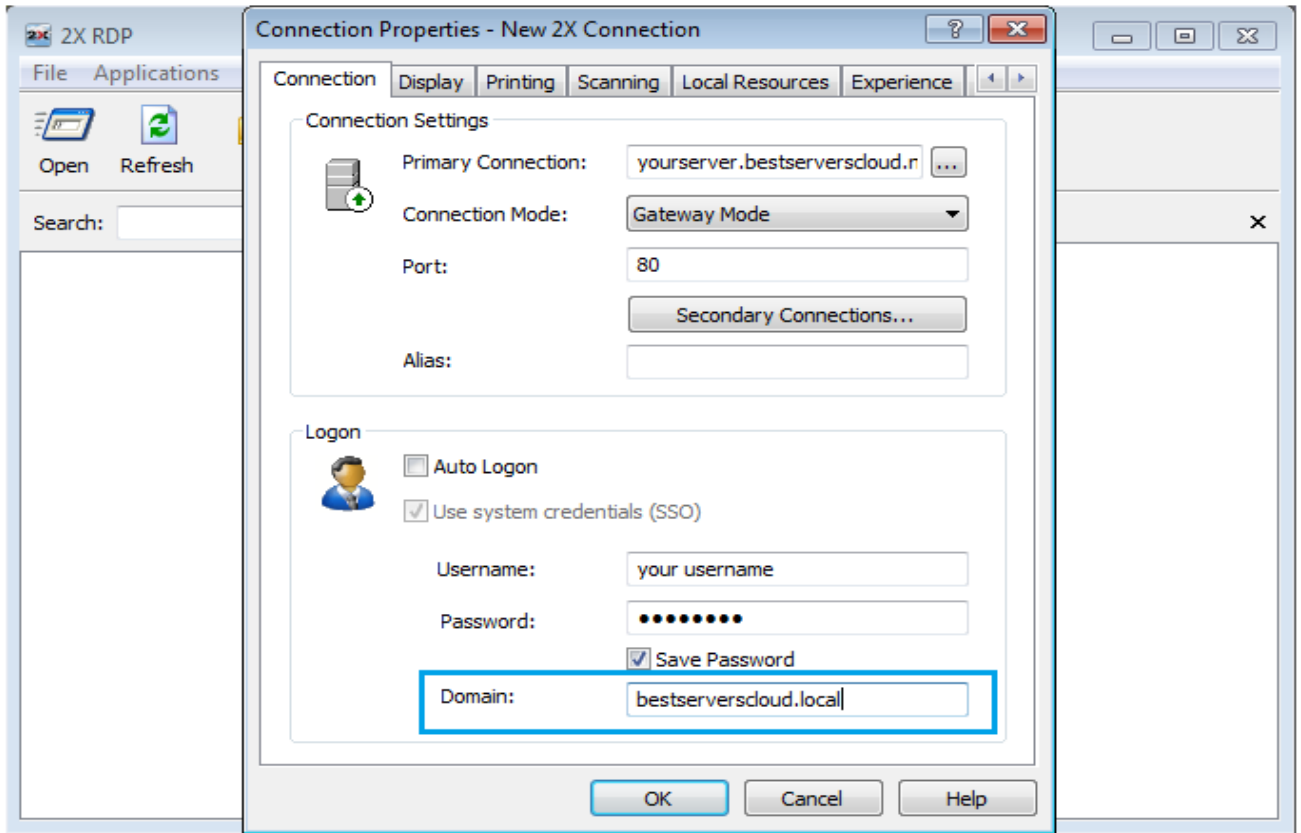
12. Under primary connection enter the name of your server, like this: yourserver.bestserverscloud.net



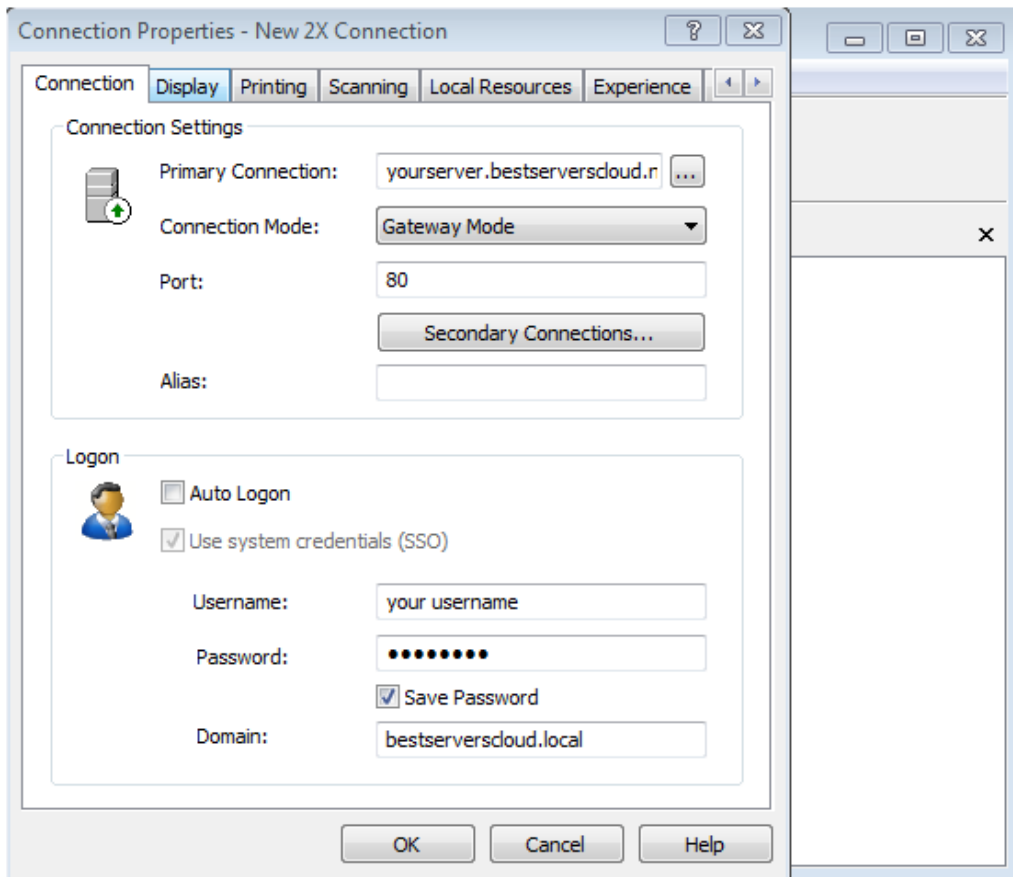
13. Then enter your username and password for the server



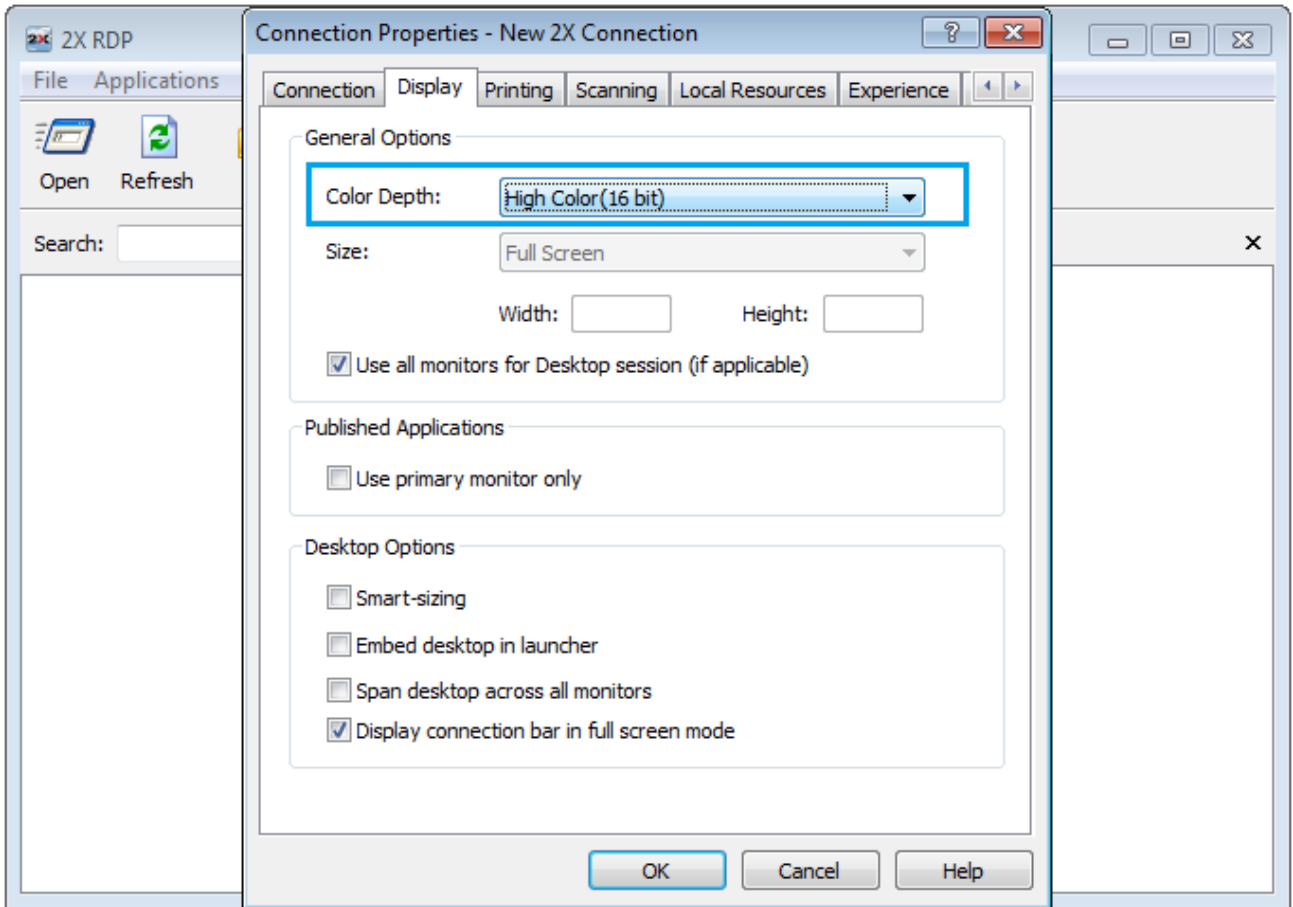
14. Enter your domain name here, if you do not know it, please contact us



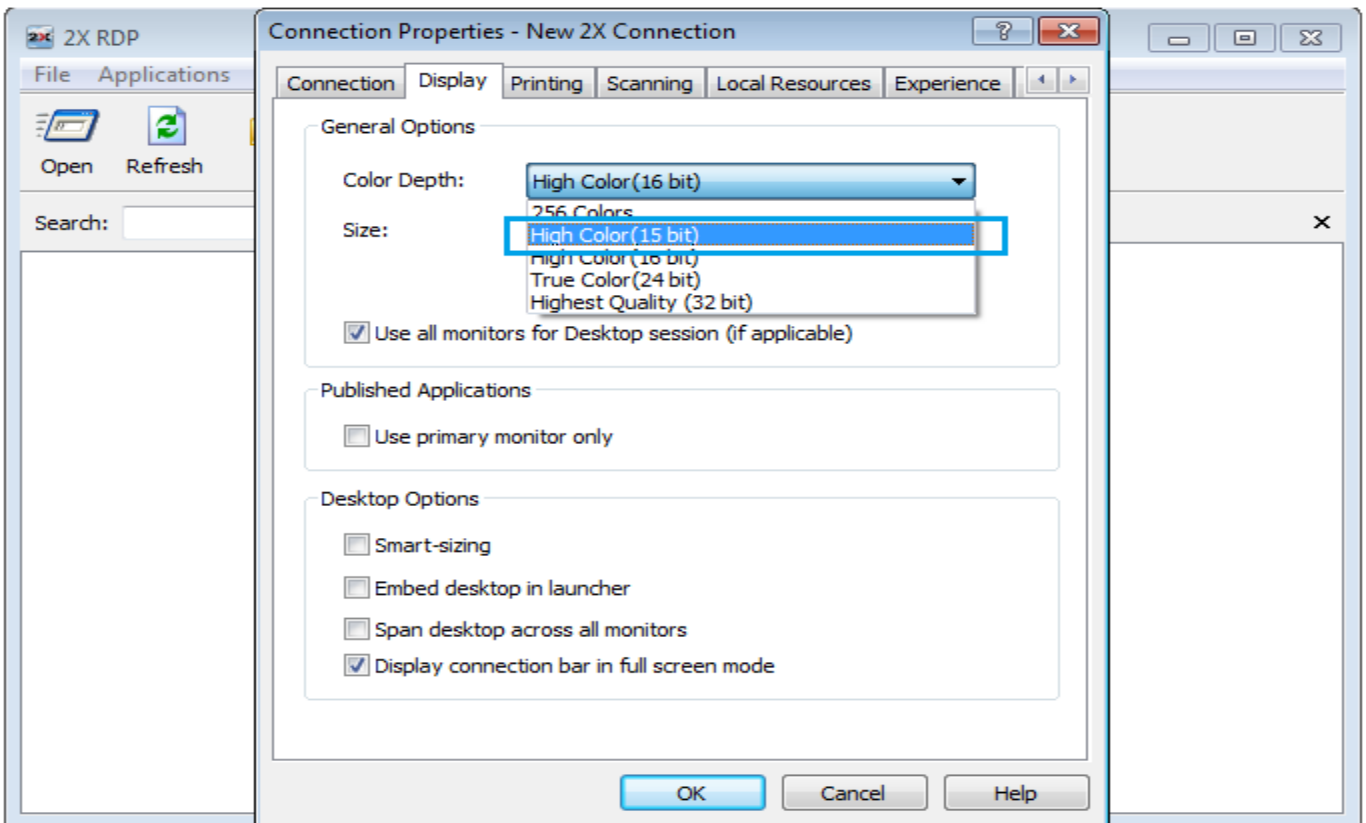
15. Once you've completed this page, select "Display" at the top of the box.



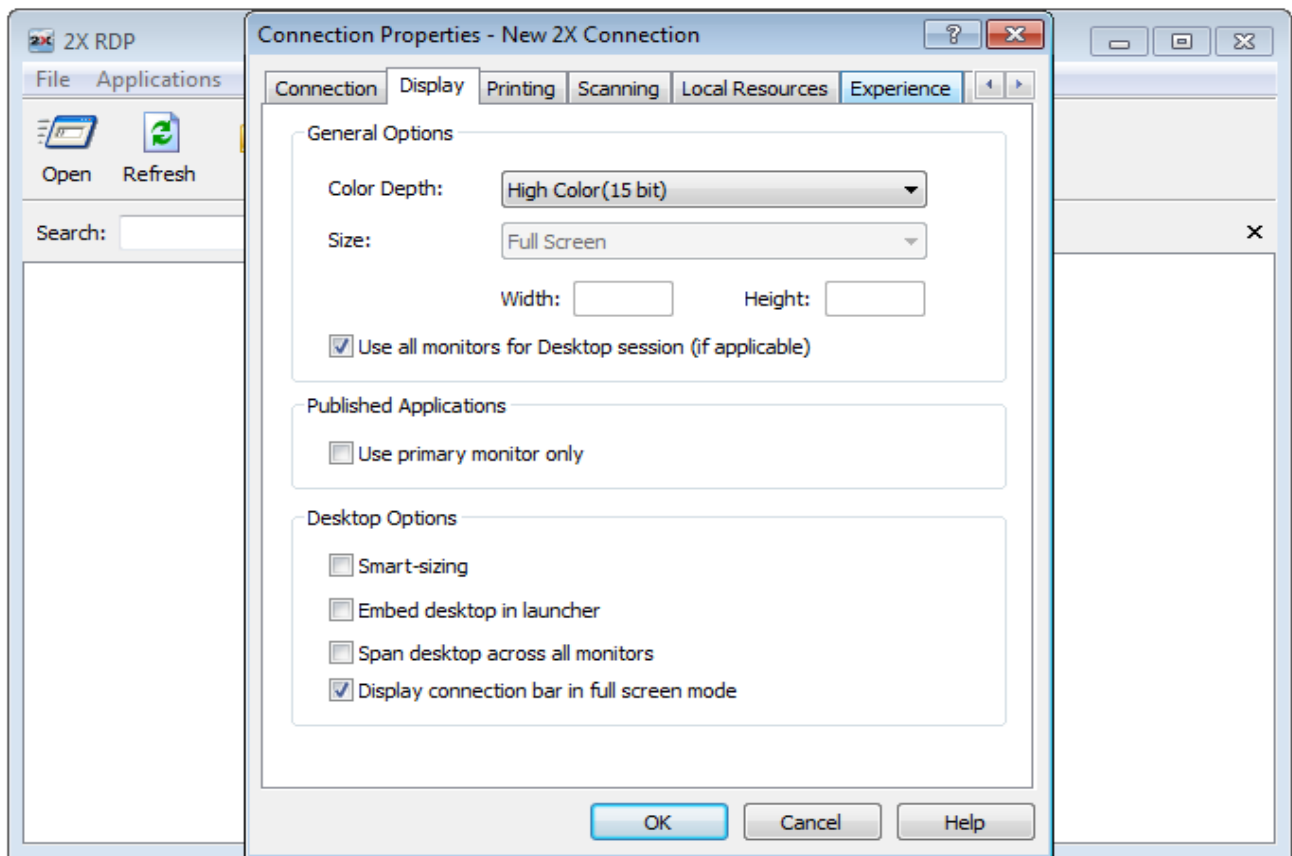
16. In display, we will change the color depth from 16 bit to 15 bit, select Color Depth and it will bring a drop down menu



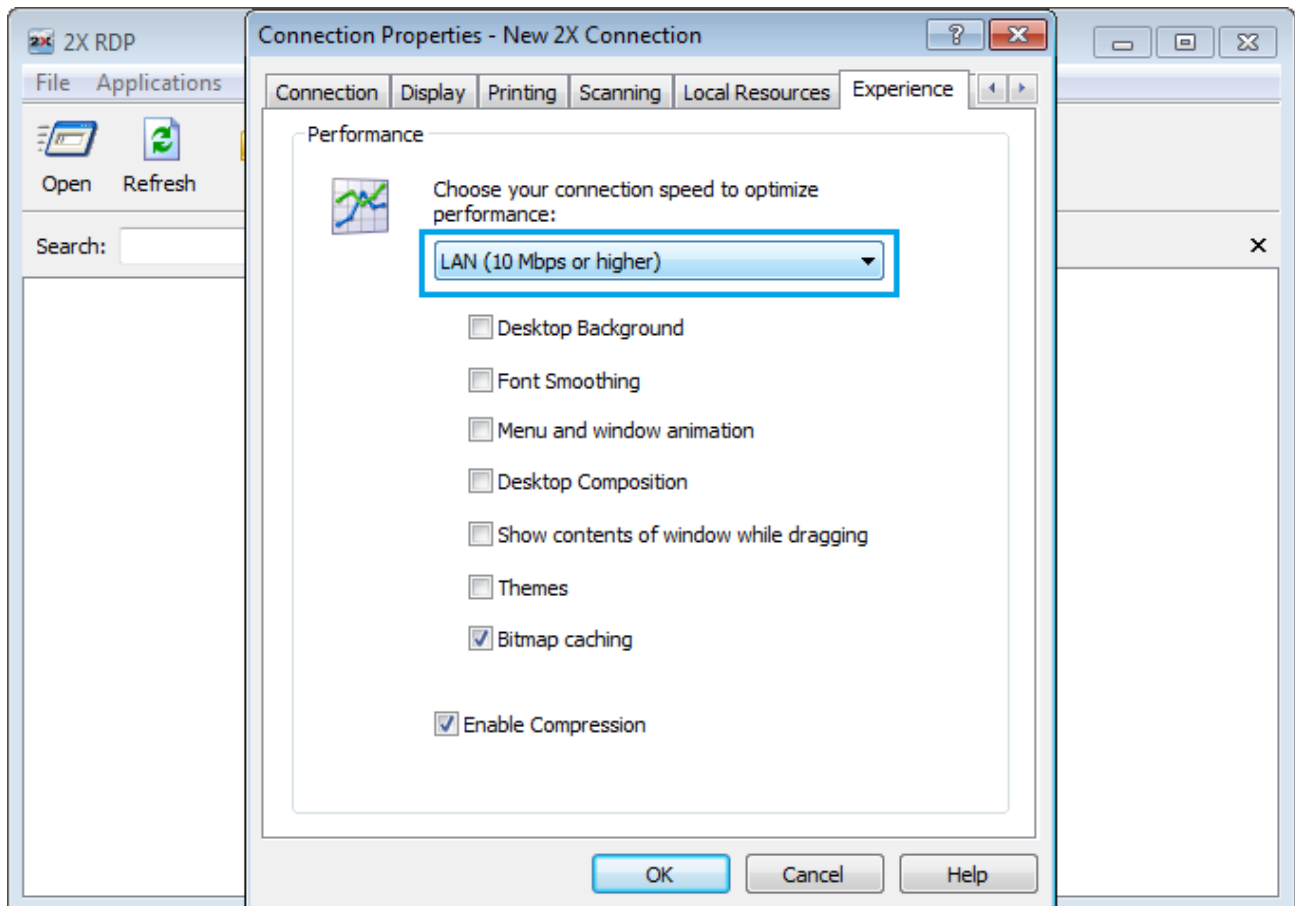
16. Then select 15 Bit from the drop down menu



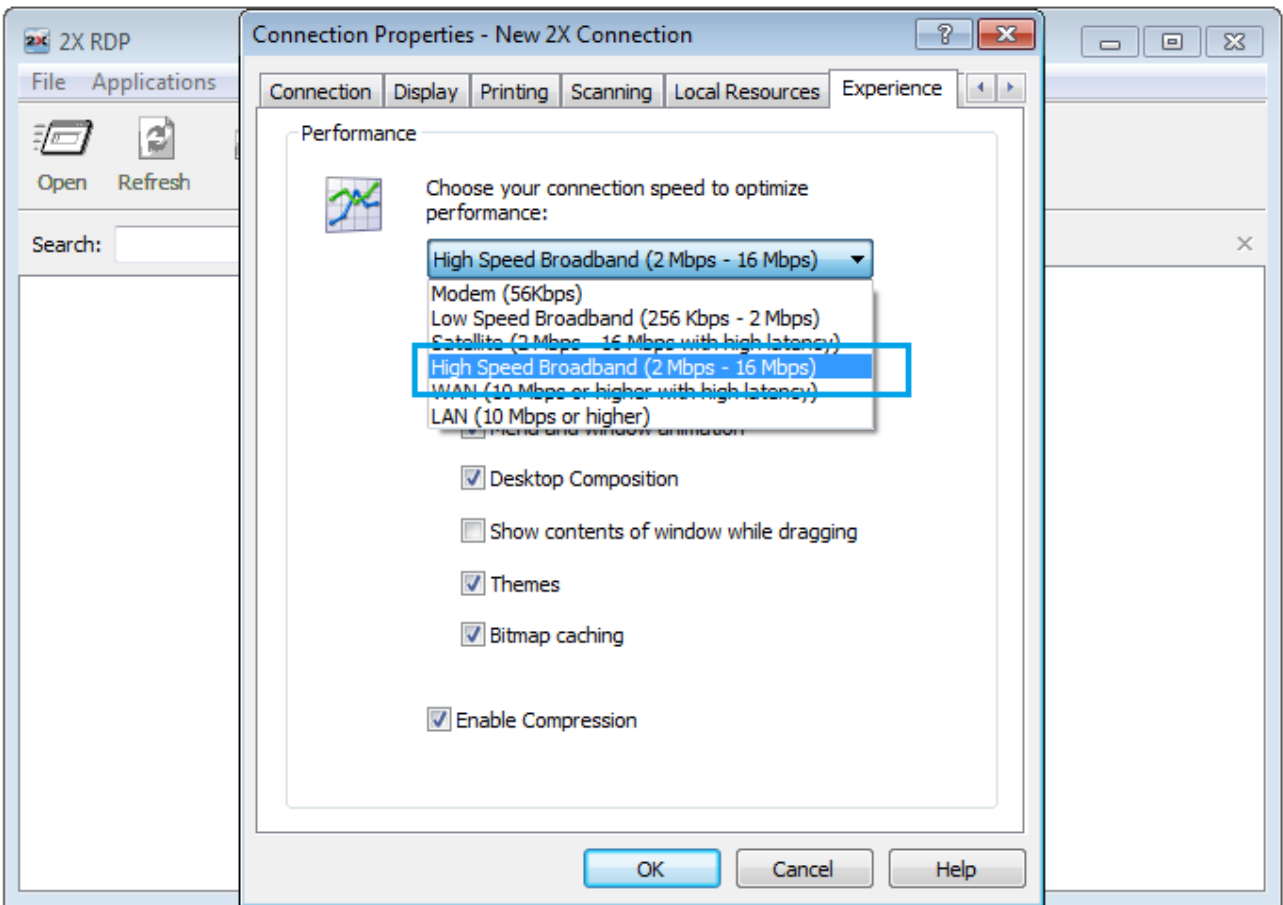
17. Then we will select the "Experience" tab from the top of the screen



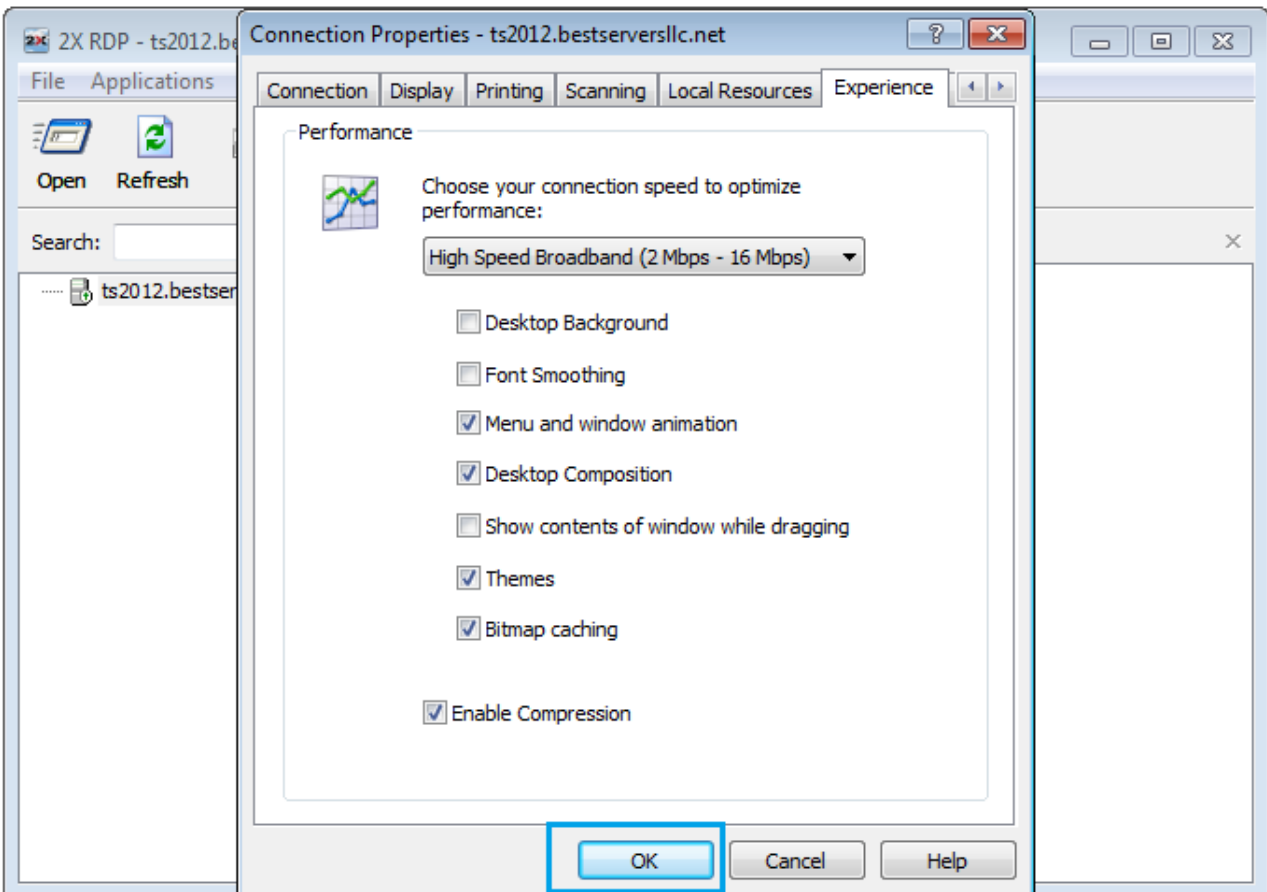
18. In the experience tab we will change the performance, so select the large drop down menu



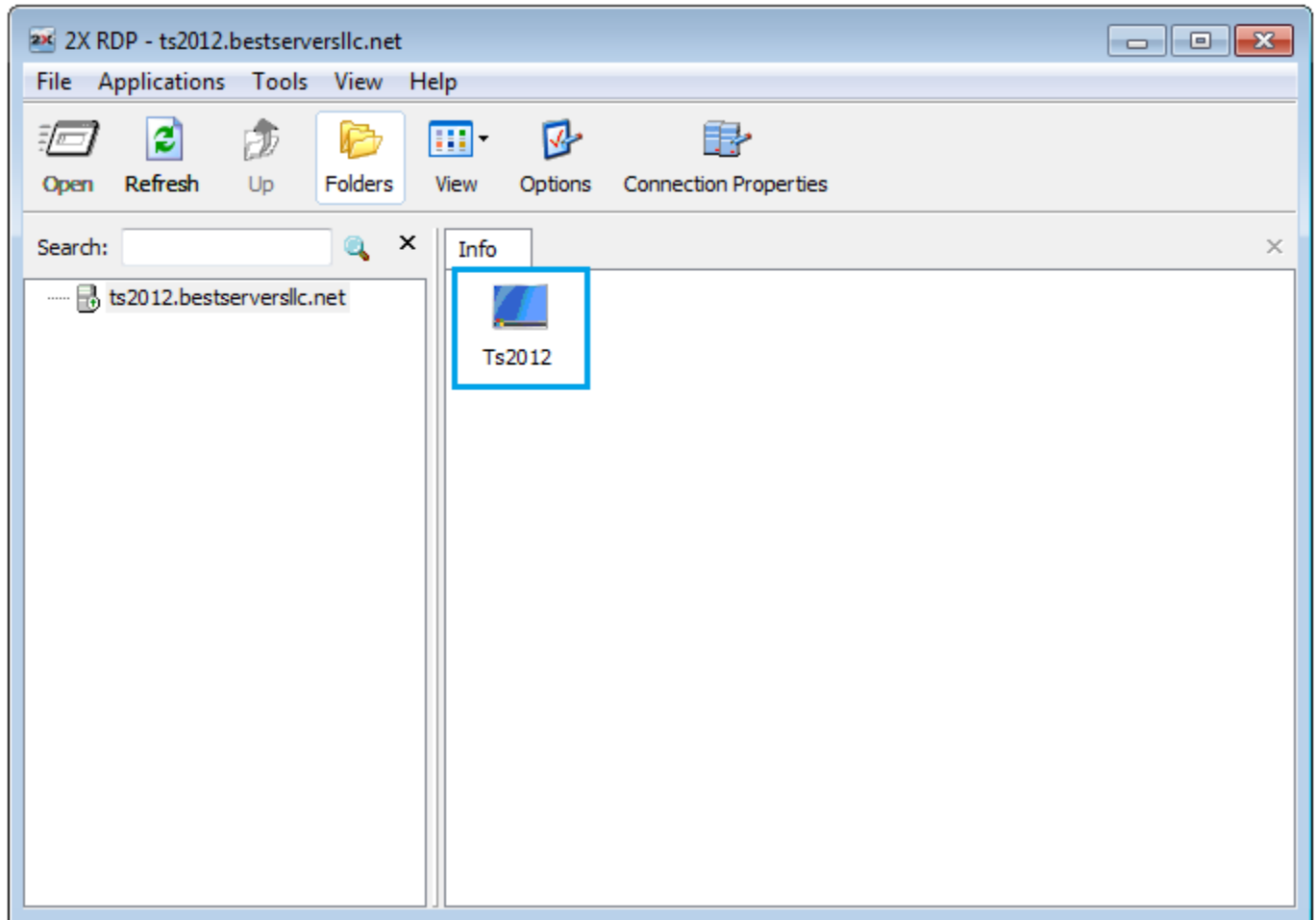
19. From the drop down select 'High Speed Broadband'



20. When all of these settings look correct, press "OK" and it will connect to your server



21. Then it will take you back to this page with the name of your server listed on the right side of 2X as shown, Double Click on the name of your server. Double click on the name of the server, or the applications you wish to run on the server.



22. You will see a window appear that looks like this, once this window disappears you will be connected to your server.

